



1365 E 6Th St. Corona, CA 92879

TEL: (951) 273-1069, FAX: (951) 273-1854



PT-CRUISER

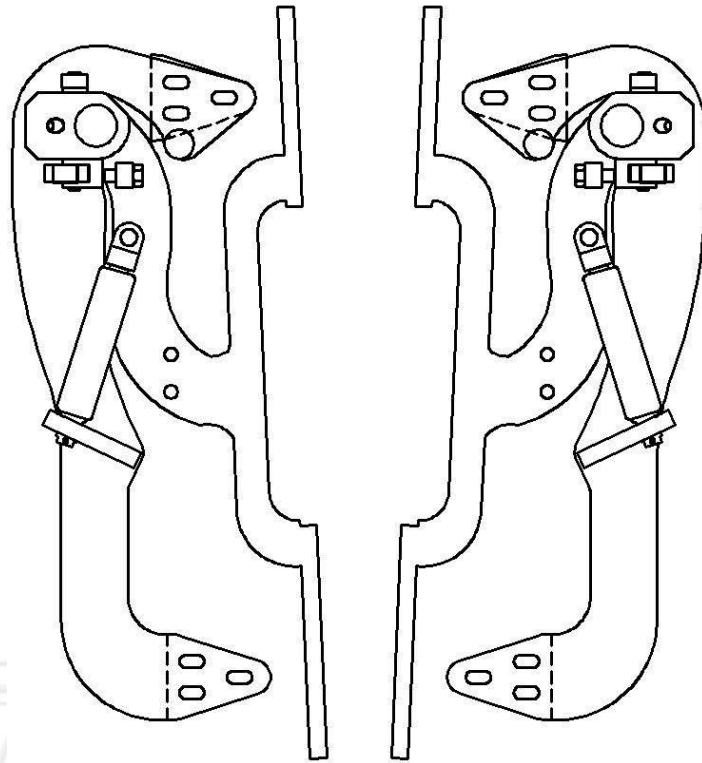
U.S. PATENTS

#6,808,223; #6,845,547; #7,140,075; #7,059,655

PATENTS AGGRESSIVELY ENFORCED!

**PLEASE CAREFULLY READ ALL INSTRUCTIONS BEFORE
ATTEMPTING TO INSTALL THIS PRODUCT.**

**FOR QUESTIONS PLEASE
CONTACT US AT (951) 273-1069**



THIS KIT INCLUDES:

- 16 M8-1.25X30MM BOLTS WITH WASHERS
- 2 SHOULDER BOLTS WITH WASHERS
- 2 PINS
- RIGHT AND LEFT HINGE ASSEMBLY
- 2 SHOCKS 720 PSI

TOOLS REQUIRED FOR INSTALLATION:

	<ul style="list-style-type: none"> ➤ AIR RACHET, GRINDER AND CUTTER.
	<ul style="list-style-type: none"> ➤ 7MM, 8MM, 10MM, 11MM, 13MM, SOCKETS AND EXTENSION.
	<ul style="list-style-type: none"> ➤ FORK AND PHILLIP'S SCREW DRIVERS
	<ul style="list-style-type: none"> ➤ SPACERS FOR THE DOOR GAP.
	<ul style="list-style-type: none"> ➤ 3/16 ALLEN WRENCH
	<ul style="list-style-type: none"> ➤ 1/4 TORX BIT
	<ul style="list-style-type: none"> ➤ 9/16 WRENCH
	<ul style="list-style-type: none"> ➤ LOCKTITE RED

OTHER TOOLS MAY BE NEEDED DEPENDING ON YOUR VEHICLE.

(Note: The pictures on the manual are for reference only they may not match your vehicle.)

1) Disconnect the battery.

2) Remove fender:

Remove all bolts and plastic clips securing the wheel well.



You will need to remove the grill by removing (4) 7mm bolts 2 from each side of the grill.



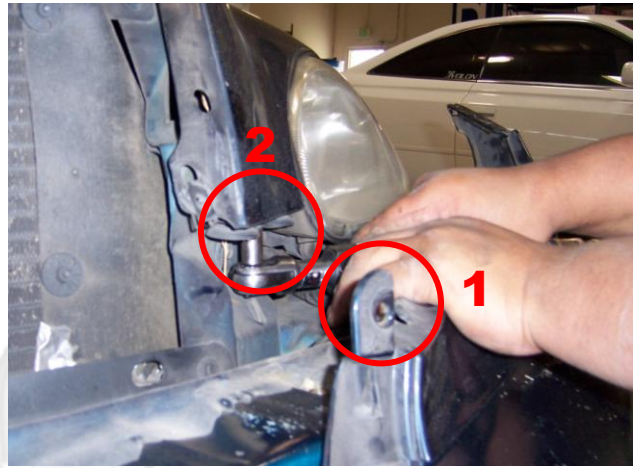
After removing the grill you will be able to remove the 10mm bolts securing the fender to the front of the body.



After removing all the fasteners from around the wheel well you will be able to pull on the wheel well and remove the (2) 10mm nuts securing the fender to the bumper.



Remove (1) 10mm bolt from the front of the bumper, pull back on the bumper to gain access to (1) 10mm bolt that secures the fender to the body.



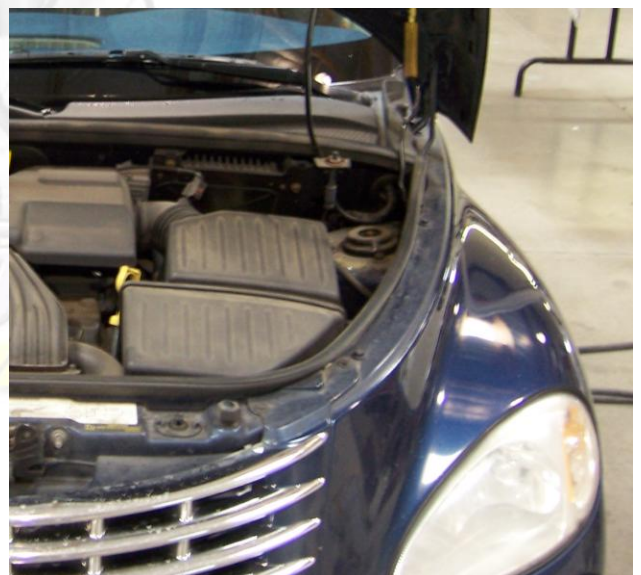
Remove the (2) 10mm bolts securing the fender to the chassis. The bolts are located under the car at the bottom of the door.



Pull back on the wheel well and remove (2) 10mm bolts securing the fender to the side of the body. One will be right under the wheel well and the other one is located by the factory hinge, inside the fender as shown.



Remove all the 10mm bolts from the top of the fender. You will need to use a wrench to remove the last 10mm bolt located by the windshield pillar.



With the fender loose pull on it to gain access to (1) 10mm bolt located inside the fender by the headlight. Now carefully pull the fender off and have you helper disconnect the headlight wire harnesses.



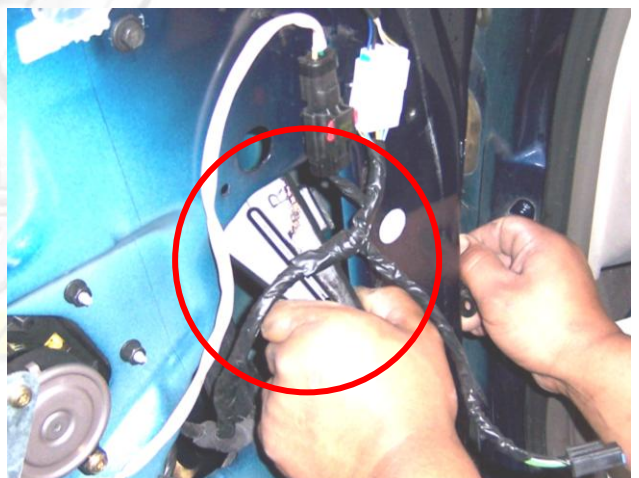
3) Remove the door catch:
Remove the bolts securing the door catch to the body and the door and then push it inside the door.



To retrieve the door catch you will have to remove the door panel by removing the covers and screws located under the covers. As you remove the door panel, make sure to carefully disconnect the wire harnesses and the mechanical door lock mechanism.



Once the door panel is off the car you will need to remove the speaker to gain access to the door catch.



Once the door catch has been removed you can replace the door panel.

4) Modify the factory wire boot:
Use the fork to help you pull the factory wire boot off the car, cut the wire shrink wrap so that the wires come loose, this will let you pull on the wires to gain more wire slack. Also cut the factory wire boot in half.



5) Factory hinge removal:
Open the door and remove the foot guard and the kick plate, remove (1) 12mm bolt securing the factory hinge to the body. Close the door and use blue painter's tape to secure the door to the body.



Use a 12mm socket to remove the rest of the bolts securing the factory door hinge.

Add the spacers after removing the factory hinges.

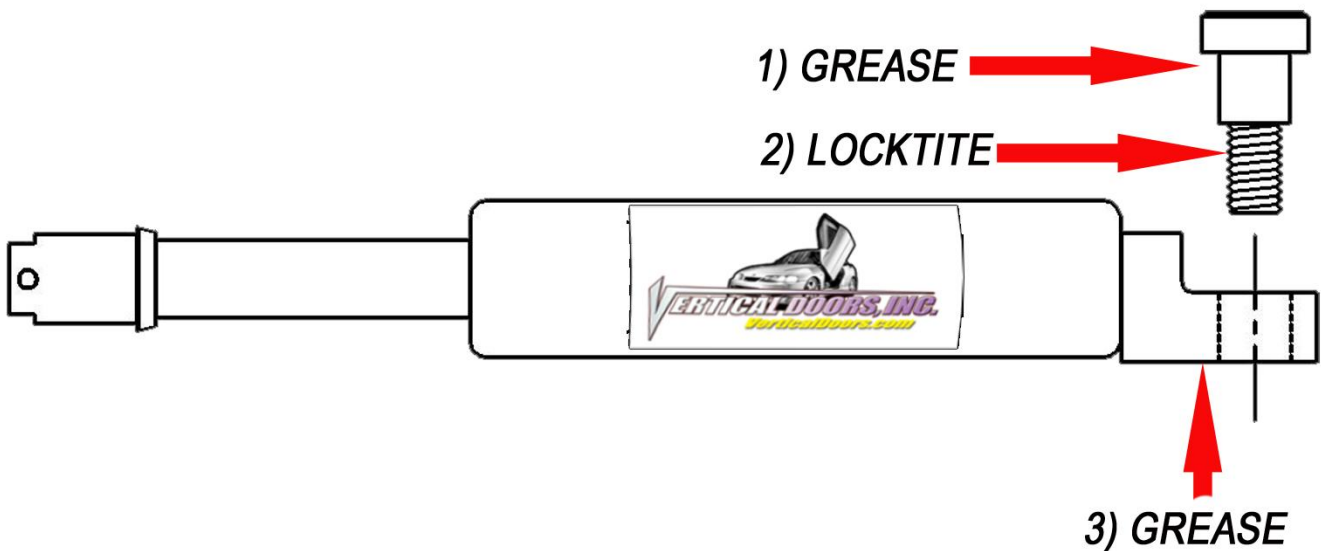
Hint (You can make your spacer out of paint sticks and about 8-10 turns of blue painters tape)*



6) Install new Vertical Doors Inc. system:
In order for the new VDI system to sit flat against the apron you will have to cut fender hold down brackets as shown.

Hint Tighten the bolts on the door first and then install the bolts on the body.*



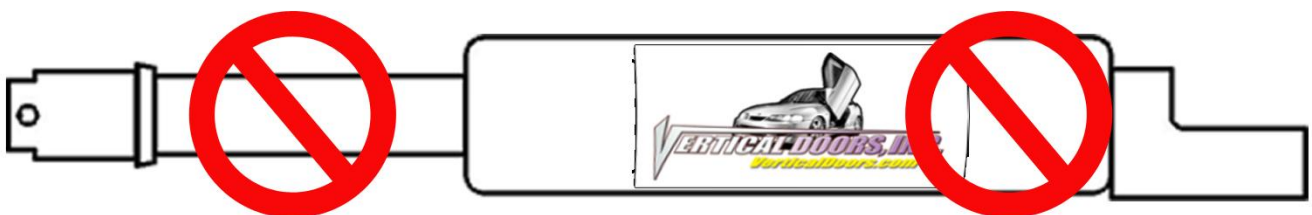


****IMPORTANT STEP: DO NOT SKIP THIS STEP. THIS STEP IS CRUCIAL IN YOUR INSTALLATION PROCESS, IF THIS STEP IS NOT COMPLETED WHEN INSTALLING THE VERTICAL DOOR KIT; ALL WARRANTIES ARE VOIDED, AND MAY CAUSE FUTURE PROBLEMS WITH YOUR VERTICAL DOOR SYSTEM.***

1ST, make sure you put grease on the body of shoulder bolt where the arrow is pointing.

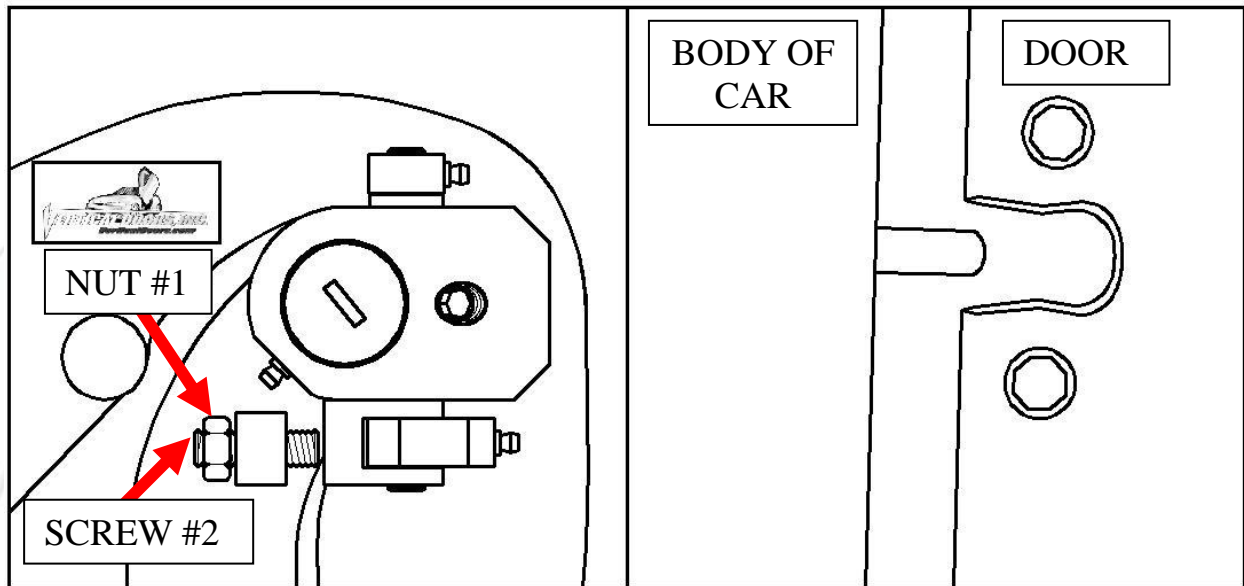
2ND, make sure you put red Locktite, where the arrow is pointing, on thread of shoulder bolt.

3RD, make sure you put grease on the bottom side of the shock end.



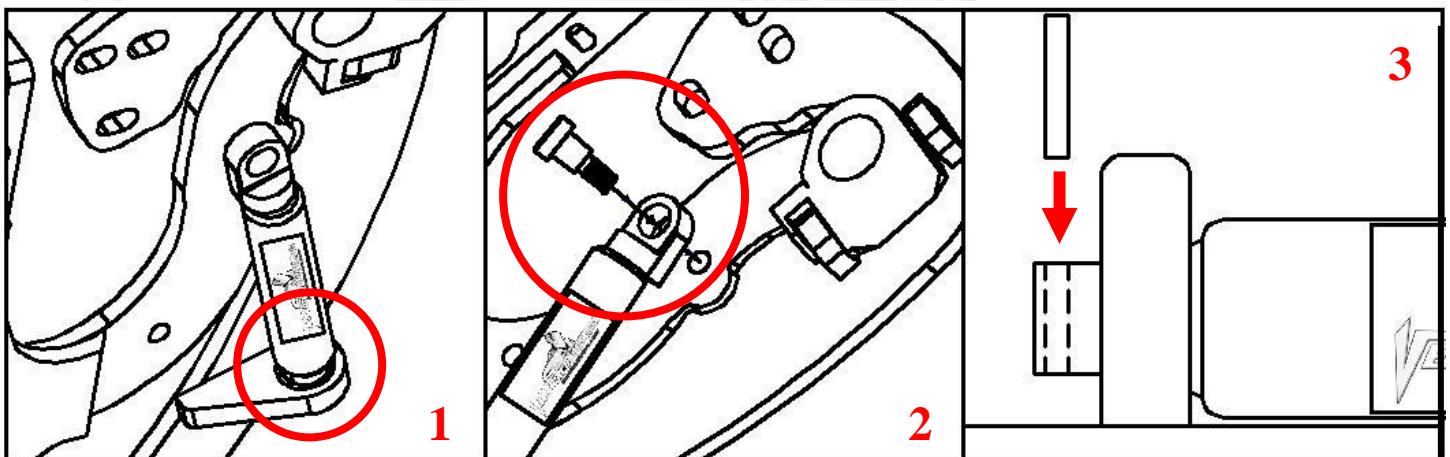
WARNING! THE USE OF ANY TYPE PLYERS, PAINT OR FOREING MATERIALS ON THE SHOCK'S BODY OR SHAFT WILL VOID THE WARRANTY.

7) Once hinge is locked in place, break nut #1 then turn Allen set screw #2 on fig until it hits the block then open the door and continue to adjust until the door matches with the striker, open and close door making sure it closes like factory.



Hint(leave #1 nut loose until shock is installed Allen set screw will have to be re-adjusted after shock is installed.*

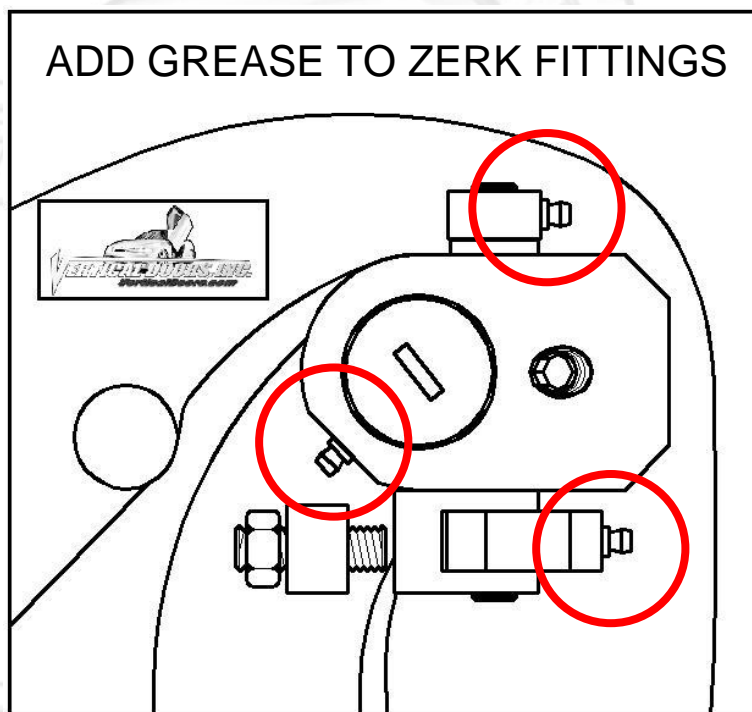
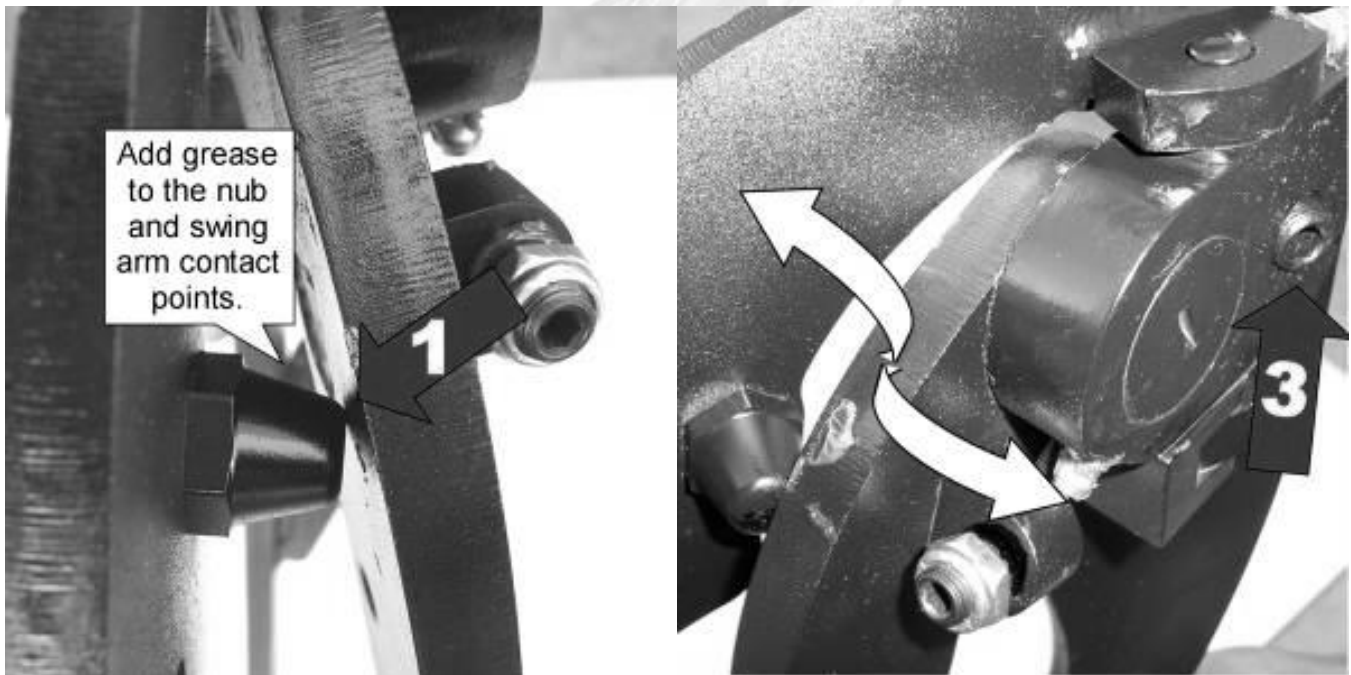
8) Install the shock.



Hint (You will need a helper to raise the door). (Slip the spherical rod mount into the spherical ball bearing (1). Using a 1/4 Allen wrench, tighten the screw into the swing arm (2). After the shock is installed secure it by installing the pin in the bottom shock end (3).*

9) After shock is installed re-install door panel and lift the door. Adjust door opening screw #3 clockwise until distance between nub and swing arm is enough so that the swing arm moves up and down freely.

Hint (Fine tune the Allen Adjustment screw (#2) to realigned striker with door. After the door is align test door by opening and closing, lifting and lowering door several times.*

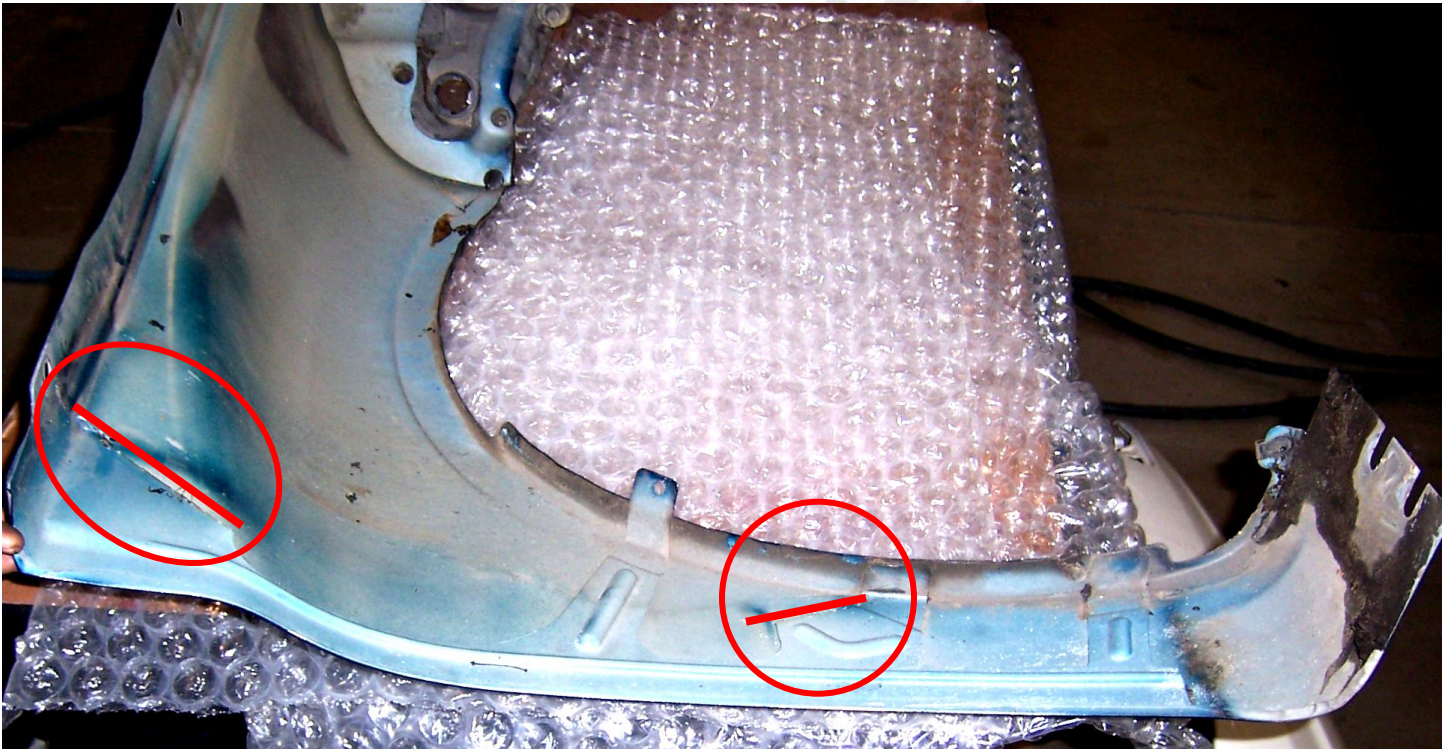


Note: Do not install fender until the adjustment of the door is accurate, and the set screw is tightly secure. Also make sure everything is tight, adjustment is set and everything is Locktite.

10) Modify factory wire loom:
After cutting the factory wire boot in half you will be able to raise the door. Use wire loom to protect the exposed wires.



11) Cut the inner lip of your fender to make room for the new Vertical Doors hinge. Note: After you have cut the fender use a sander or grinder and make sure the surface is completely flat.

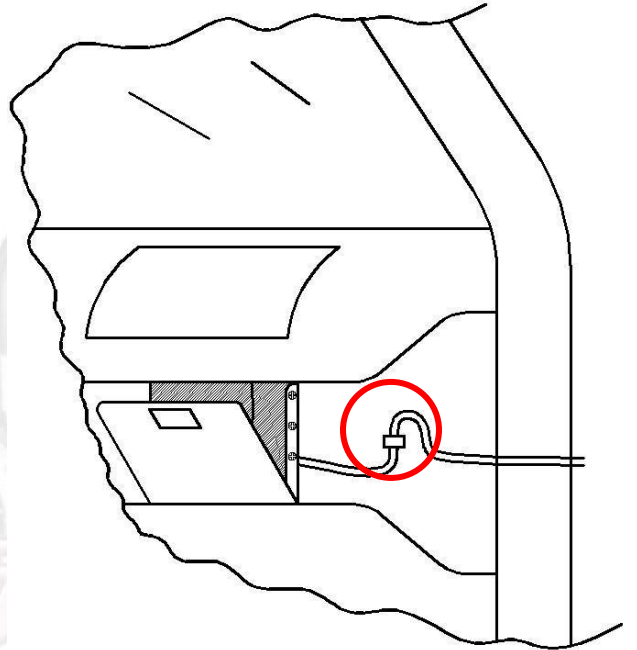


12) Close the door and replace the fender by reversing step 2.

Hint(Make sure the electrical wires don't get pinched enough to damage wires)*

13) For the other side just follow steps 2-12.

Note: If you need more wire slack on the passenger side you will have to remove the dash board cover by opening the glove compartment and removing the screws securing it. Undo the plastic wire clip, this will give you extra wire slack.

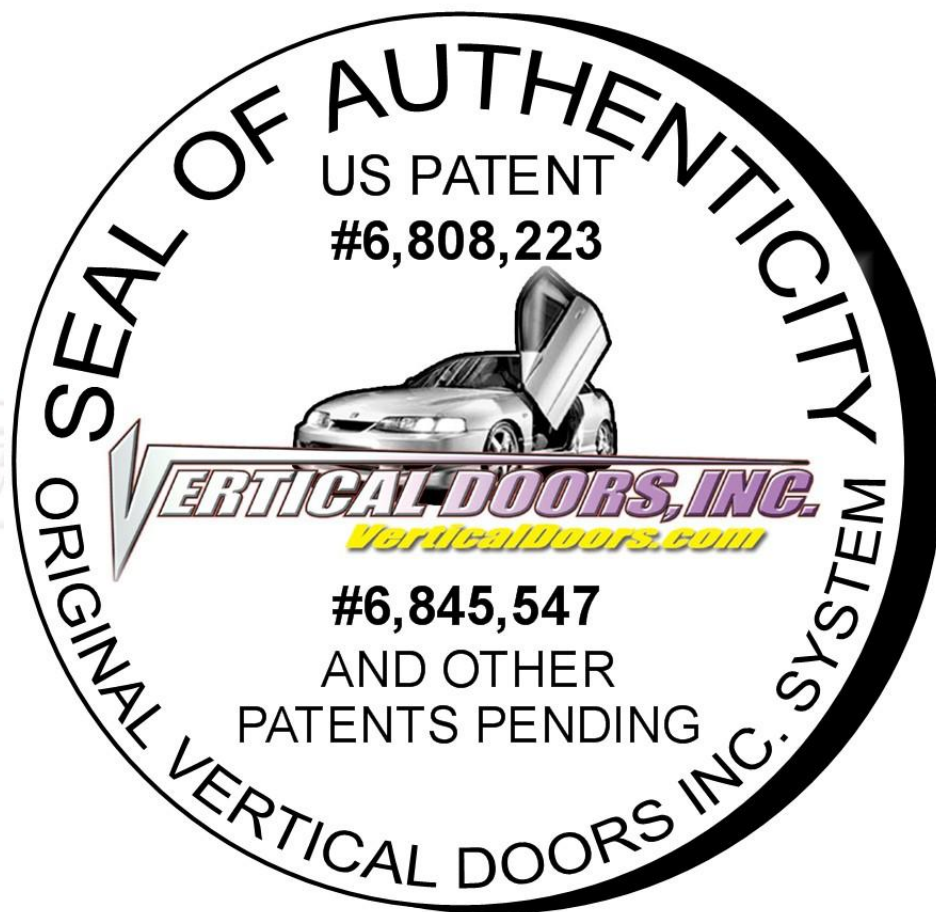


Thank you for your purchase of the
CHRYSLER PT CRUISER

VERTICAL DOORS INC. SYSTEM

Simply Uplifting

VERTICAL DOORS, INC.
VerticalDoors.com



VERTICAL DOORS, INC.
VerticalDoors.com

NOTE:

Vertical Doors Inc. assumes no responsibility for any damages caused by improper installation